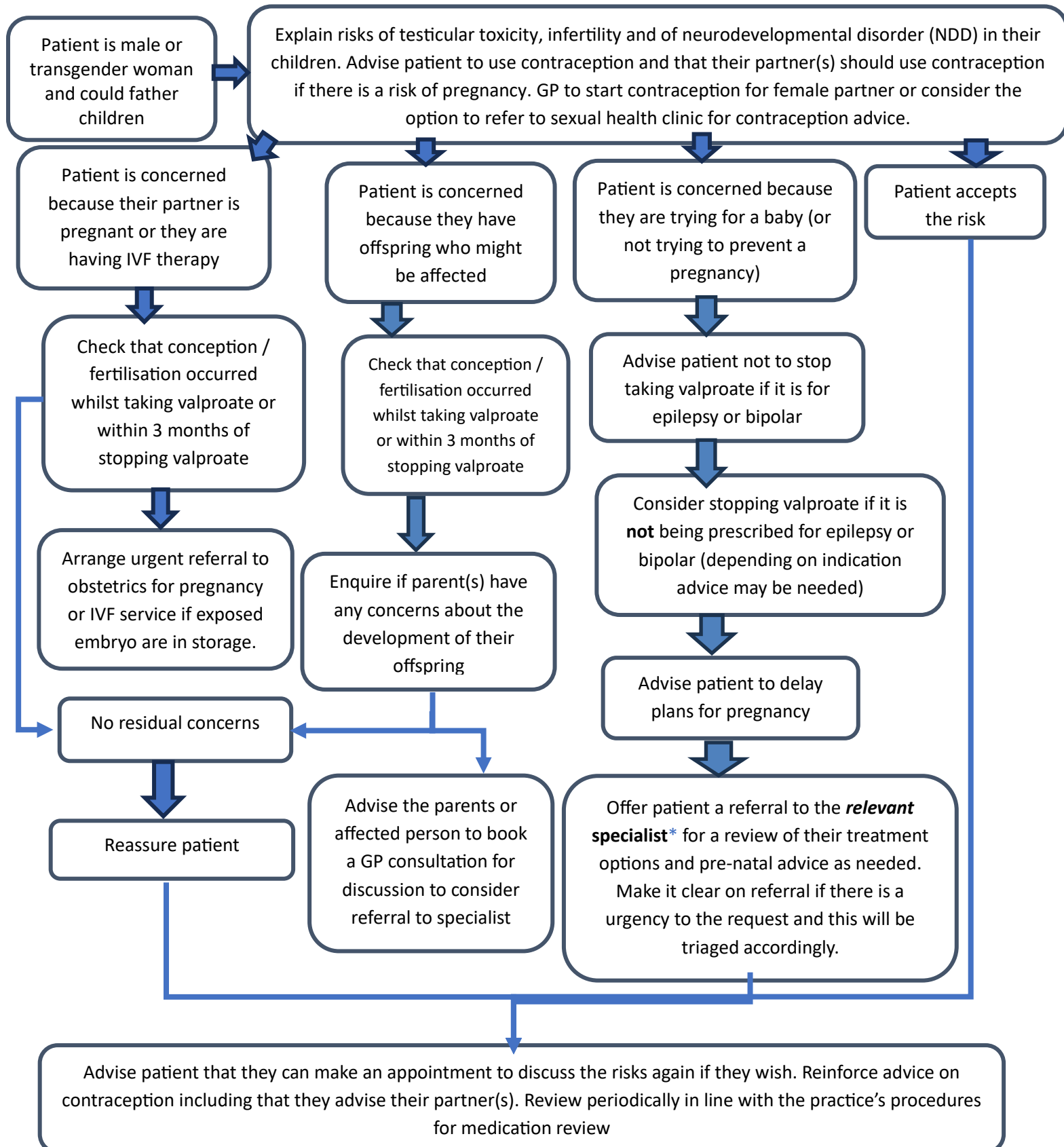


Roles and responsibilities in primary and secondary care around how to manage patients of childbearing potential on valproate medication – Existing Male Valproate Patients



*Where Neurology advice is needed, e.g. where a patient wants to come off their valproate medicine to start a family, contact the Neurology Advice and Guidance service via e-RS. See [Remedy](#) for more information.

Glossary:

IVF – In vitro fertilisation

Transgender – woman - A term used to describe someone who is assigned male at birth but identifies and lives as a woman. This may be shortened to trans woman, or MTF, an abbreviation for male-to-female.¹

NDD - neurodevelopmental disorder

References:

1. Royal Pharmaceutical Society. LGBTQIA+ related Microaggressions [Online]. Available from: <https://www.stonewall.org.uk/resources/list-lgbtq-terms> [Accessed 15th October 2024]