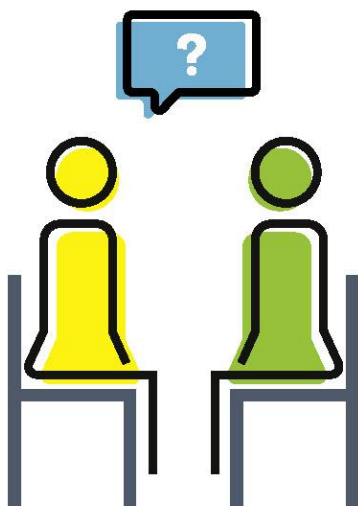


National Female Genital Mutilation Support Clinics:

Information for professionals



What are the National FGM Support Clinics for women (18 years +)?

The NFGMSC are community-based clinics that will provide a holistic model of care to women (18 years +) who have undergone FGM and who are not pregnant at the point of seeking help. They will offer a range of support services delivered by an all-female multi-disciplinary team including;

- physical assessments and treatment (including deinfibulation if required),
- emotional support/counselling,
- general information,
- access to a FGM Health Advocate, and;
- onward support to a specialist Consultant if additional management is required.

The clinics will be located across each of the four regions: North of England, Midlands and East, London and the South region.

The NFGMSC provides an environment where women are invited to discuss their health needs in a sensitive and non-judgmental environment. This is a fast-track service where women can self-refer, but referrals from GPs and other health professional are strongly encouraged.

Referring into the service does not replace your safeguarding duties. Please see the "Safeguarding" section for more details.

What is female genital mutilation?

Female genital mutilation (FGM) is a procedure where the female genitals are deliberately cut, injured or changed, when there is no medical reason for this to be done.

- FGM is usually carried out on young girls between infancy and the age of 15, most commonly before puberty starts.
- It is child abuse and is illegal in the UK.
- FGM violates the human rights of women and girls.
- FGM is a custom and tradition – there are no religious texts that say it should be carried out.
- It's very painful and can seriously harm the health of women and girls. It can also cause long-term problems with sexual activity, fertility, childbirth and mental health.

What are the different types of FGM?

Type 1: Partial or total removal of the clitoris and/or the prepuce (clitoridectomy).

Type 2: Partial or total removal of the clitoris and the labia minora, with or without excision of the labia majora.

Type 3: Narrowing of the vaginal orifice with creation of a covering seal by cutting and appositioning the labia minora and/or the labia majora, with or without excision of the clitoris (infibulation).

"FGM is a custom and tradition – there are no religious texts that says it should be carried out"

Type 4: All other harmful procedures to the female genitalia for non-medical purposes, for example: pricking, piercing, incising, scraping and cauterization

What about pregnant women, how can they be supported?

Support for your pregnant patients who have had FGM is available through the Maternity Department at your local hospital.

What about under 18 year olds, how can they be supported?

Support for under 18 year olds is available by referring them to the specialist paediatric service at UCLH. Appointments for the clinic can be obtained by emailing UCLH.PaediatricSafeguarding@nhs.net.



FGM and the Law

In the UK, it is against the law:

- for anyone to carry out FGM.
- to take girls or women who live in the UK to another country to carry out FGM.
- to help someone else carry out FGM, (this includes making travel arrangements). person convicted of an offence under the FGM Act 2003 is liable to imprisonment for up to 14 years.
- It is also illegal to sew women up after childbirth, this is known as reinfibulation.

Safeguarding

You **MUST** follow the FGM safeguarding pathway.

Referring into the service does **NOT** replace your safeguarding duties.

FGM Safeguarding Pathway

Please follow the FGM Safeguarding Pathway and FGM Risk Assessment as set out by the Department of Health: <https://www.gov.uk/government/publications/safeguarding-women-and-girls-at-risk-of-fgm>

Mandatory Reporting

If a girl tells you she has had FGM, or you see that a girl has had FGM, you **MUST** report this via 101. Please see more information on Mandatory Reporting: <https://www.gov.uk/government/publications/mandatory-reporting-of-female-genital-mutilation-procedural-information>

FGM Enhanced Dataset

The FGM enhanced dataset collection (Dataset Standard (SCCI2026)) applies to the following NHS organisations in England:

- NHS acute trusts (Foundation and non-Foundation).
- Mental health trusts (Foundation and non-Foundation).
- General practices.

Every organisation **MUST** submit data to NHS Digital each quarter. If your organisation needs support please contact enquiries@nhsdigital.nhs.uk.

FGM-IS system

The FGM-IS is a national IT system that supports the early intervention and ongoing safeguarding of girls, under the age of 18, who have a family history of FGM. If your organisation needs support please contact enquiries@nhsdigital.nhs.uk.

Making a referral to your closest clinic for women (18 years +)

Your closest NFGMSC is

Opening times

Address

Phone number

Email for referral

For more information on the full list of clinics, please visit: www.nhs.uk/fgm



#FGMQUESTIONS
#NFGMSC
#ENDFGM